



FCS 3307- PATROL

STANDARD



GENERAL

Hull material	Aluminium
Superstructure material	Aluminium
Basic functions	Fast supplier / Crew boat / Patrol duties / Maritime safety / Securing economical Waters & coastal boundaries / Search and rescue
Classification	Bureau Veritas I * Hull * MACH Light ship/ Fast Patrol Vessel Sea Area 3

DIMENSIONS

Length overall	34.2 m
Beam overall	7.3 m
Depth at sides	3.3 m
Draught max	2.5 m
Deadweight max	Up to 65.0 t
Cargo deck area	75.0 m ²
Deck load	2.5 t/m ²
Deck cargo	20.0 t
Gross tonnage	168
Crew	Up to 6 persons
(Security) personnel	Up to 14 persons

TANK CAPACITIES

Fuel oil	60.3 m ³
Fresh water	18.1 m ³
Sewage	4.9 m ³
Bilge water/ dirty oil	1.4 m ³

PERFORMANCES

Speed	Up to 30.0 kn
Range at max speed	1,700 nm

PROPULSION SYSTEM

Main engines	3x Caterpillar / MTU
Total Power	Up to 3,580 kW
Gearboxes	3x Reintjes WVS series
Propulsion	3x Fixed pitch propellers
Bow thruster	1x 75 kW, hydraulically driven

ELECTRICAL EQUIPMENT

Network	24V DC, 230V/400V 50Hz AC
Generator sets	2x 51.5 kW

Note: Delivery of vessel and/or equipment may be export controlled

DECK LAY-OUT

Anchor equipment	1x 105 kg HHP Pool TW, chain, electric winch
Fendering	Aluminium fender on deck level, heavy duty rubber fender transom corners and tyre fender at sides

SHIP SYSTEMS

Ship systems are according to Class	
Fuel filtration	1x Non-self-cleaning dynamic separator
Engine room ventilation	2x Supply fan, 38,000 m ³ /hr in total
Air-conditioning	Up to 220,000 BTU/hr
Fire extinguishing	Stat-X in engine room

ACCOMMODATION

Bridge deck	Wheelhouse
Main deck	Personnel cabins, mess, sanitary spaces
Lower deck	Mess, galley, crew cabins, sanitary spaces, store

NAUTICAL AND COMMUNICATION EQUIPMENT

Integrated navigation system	
Remote monitoring system	
Searchlight	1x
Radar	1x X-band
Electronic chart	1x Non-ECDIS
GPS	1x
AIS	1x
Compass	1x Magnetic, 1x GPS
Autopilot	1x
Echo sounder	1x
Internal communication	Intercom, loudhailer
External communication	GMDSS A2
Weather system	1x

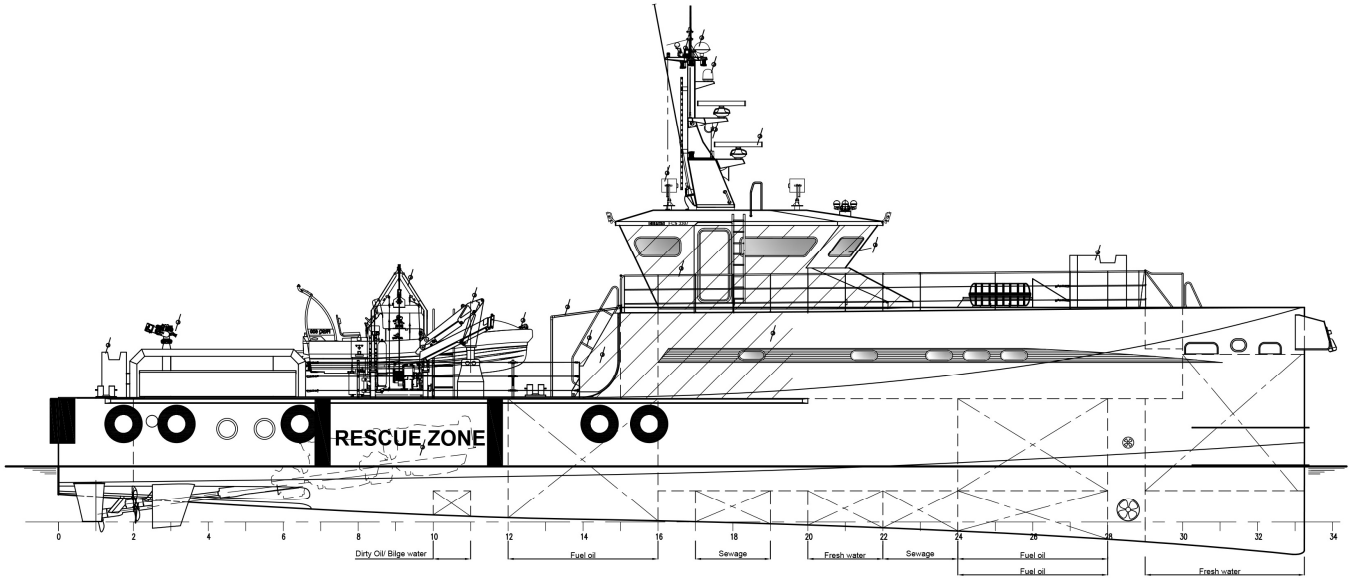
OPTIONAL

Aft deck covering	Wood
Bilge water separator	1x 0.5 m ³ /hr
Fuel filtration	Additional (non-)self-cleaning dynamic separator
Fuel consumption monitoring system	
Fresh water maker	
Sewage treatment plant	
Hoisting equipment	Foldable deck crane
Davit system and daughter craft	
External fi-fi system	180 m ³ /hr
Accommodation	Aft steering position, treatment room, survivors' space, office, additional food store

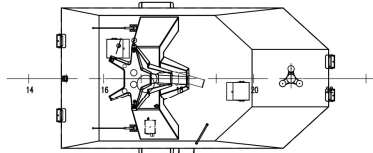
Various navigation equipment	
External communications	GMDSS A3
Data communication	Iridium, V-SAT, Fleet broadband, 4G, Wi-Fi system, LAN system
Ballistic protection	Wheelhouse, main deck mess, with steel plates/glass
Night vision camera	
CCTV system	



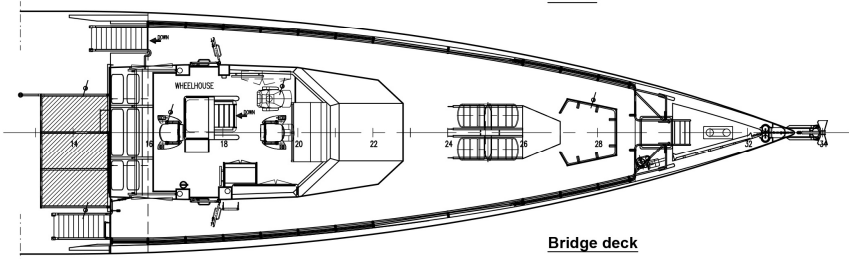
FCS 3307- PATROL STANDARD



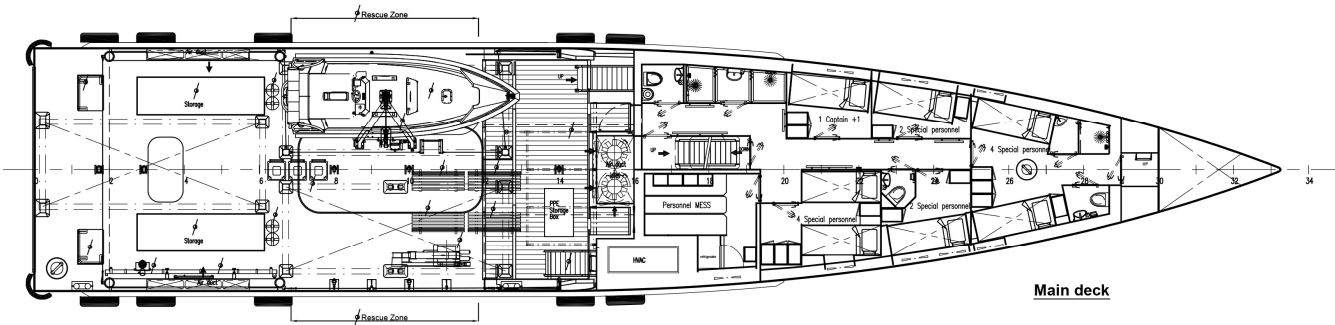
Profile



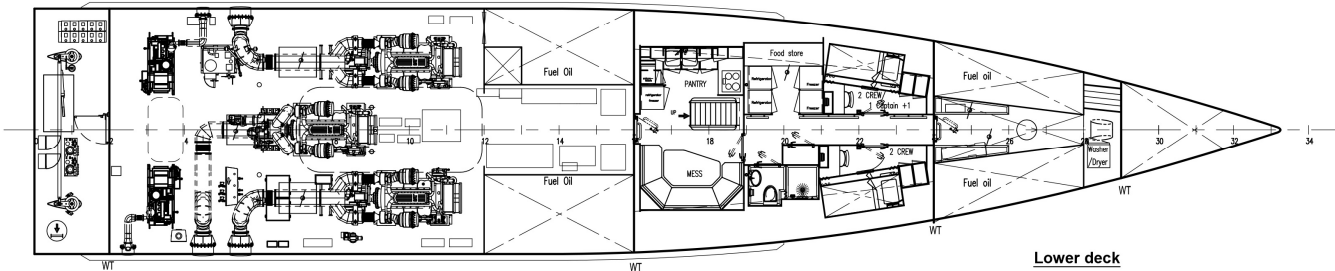
Top deck



Bridge deck



Main deck



Lower deck



Items marked with  are optional equipment

DAMEN SHIPYARDS GROUP

Avelingen-West 20
4202 MS Gorinchem
The Netherlands

P.O. Box 1
4200 AA Gorinchem
The Netherlands

phone +31 (0)183 63 99 22
fax +31 (0)183 63 21 89

info@damen.com
www.damen.com

© No part of the leaflet may be reproduced in any form, by print, photo print, microfilm, or any other means, without written permission from Damen Shipyards Group